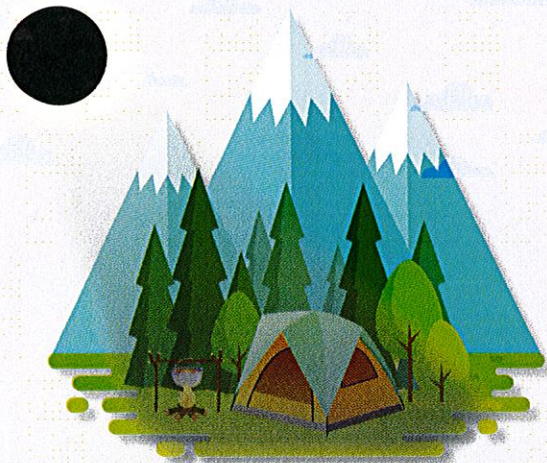


August  
21, 2017

# Idaho Eclipse 2017 Family Preparedness Kit for Travelers



- Eclipse-watching safety glasses
- Water. Two gallons of water per person per day
- Food, at least a two-day supply of non-perishable food
- Battery-powered or hand crank radio and a NOAA Weather Radio
- Flashlight and extra batteries
- First aid kit
- Manual can opener for food (if kit contains canned food)
- Moist towelettes, garbage bags and plastic ties for personal sanitation

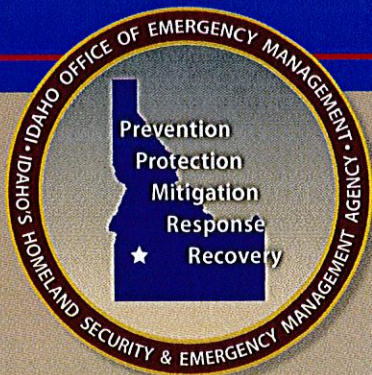


- Wrench or pliers
- Whistle to signal for help
- Local maps
- Cell phone with chargers
- Prescription medications and glasses
- Infant formula and diapers
- Pet food and extra water for your pet
- Family emergency contact information
- Cash or traveler's checks and change



Idaho Office of Emergency  
Management  
<https://loem.idaho.gov/>

Idaho Commerce  
<http://commerce.idaho.gov/eclipse/>



For all life threatening  
emergencies  
**Call 9-1-1**