

# POCATELLO POLICE DEPARTMENT FY2008 Service Level Report



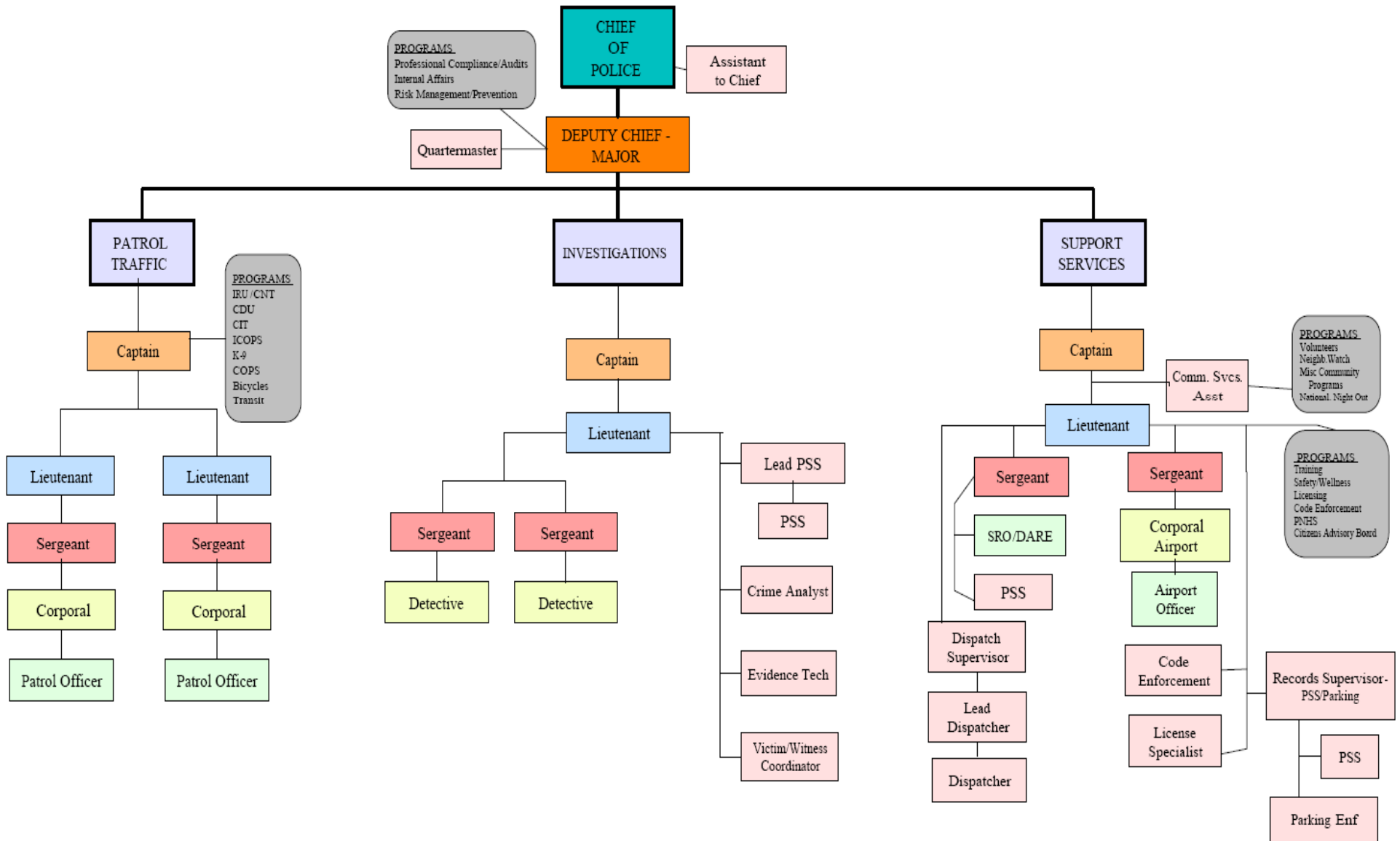
# **MISSION STATEMENT**

**The mission of the Pocatello Police Department is to enhance the quality of life in the City of Pocatello by working cooperatively with the community and within the framework of the U.S. Constitution to equally enforce the law, preserve the peace, reduce fear and provide for a safe community environment.**

# CITY OF POCA TELLO POLICE DEPARTMENT

## Organizational Chart

effective October 25, 2008



# Measures of Inputs

## Money

	FY 2004 ACTUAL	FY 2005 ACTUAL	FY 2006 ACTUAL	FY 2007 ACTUAL	FY 2008 ACTUAL	FY 2009 BUDGET
<b>POLICE DEPARTMENT</b>						
Labor	7,467,437	7,826,313	7,863,496	8,175,989	9,160,445	9,669,283
Operating	1,322,840	1,133,644	1,198,768	1,538,525	1,393,327	1,483,695
Capital	172,385	202,783	211,678	168,032	181,952	267,400
<b>Total</b>	<b>8,962,662</b>	<b>9,162,740</b>	<b>9,273,942</b>	<b>9,882,546</b>	<b>10,735,724</b>	<b>11,420,378</b>
CPI	190.9	199.2	201.8	208.9	216.6	
Real FY04 \$	8,962,662	8,780,959	8,773,020	9,029,454	9,463,090	
% Change in Real FY04 \$, FY04-FY08					5.58%	

	FY 2004 ACTUAL	FY 2005 ACTUAL	FY 2006 ACTUAL	FY 2007 ACTUAL	FY 2008 ACTUAL	FY 2009 BUDGET
<b>POLICE GRANTS</b>						
Labor	600,062	611,884	570,161	625,661		
Operating	154,787	250,384	1,343,782	134,807	189,384	293,351
Capital	90,524	23,918	24,144	831,326	198,667	29,424
<b>Total</b>	<b>845,373</b>	<b>886,186</b>	<b>1,938,087</b>	<b>1,591,794</b>	<b>388,051</b>	<b>322,775</b>
CPI	190.9	199.2	201.8	208.9	216.6	
Real FY04 \$	845,373	849,262	1,833,403	1,454,385	342,051	
% Change in Real FY04 \$, FY04-FY08					-59.54%	

# Measures of Inputs (Continued)

## People

<b>Police</b>	<b>FY04</b>	<b>FY05</b>	<b>FY06</b>	<b>FY07</b>	<b>FY08</b>	<b>FY09</b>
Full Time Sworn	91	91	88	89	89	89
Part Time Sworn	0	2	2	2	2	2
Full Time Civilian	33	32	36	38	38	38
Half Time Civilian	2	2	2	2	2	2
<b>Total FTE</b>	<b>125</b>	<b>125</b>	<b>126</b>	<b>129</b>	<b>129</b>	<b>129</b>

## Inherited Capital

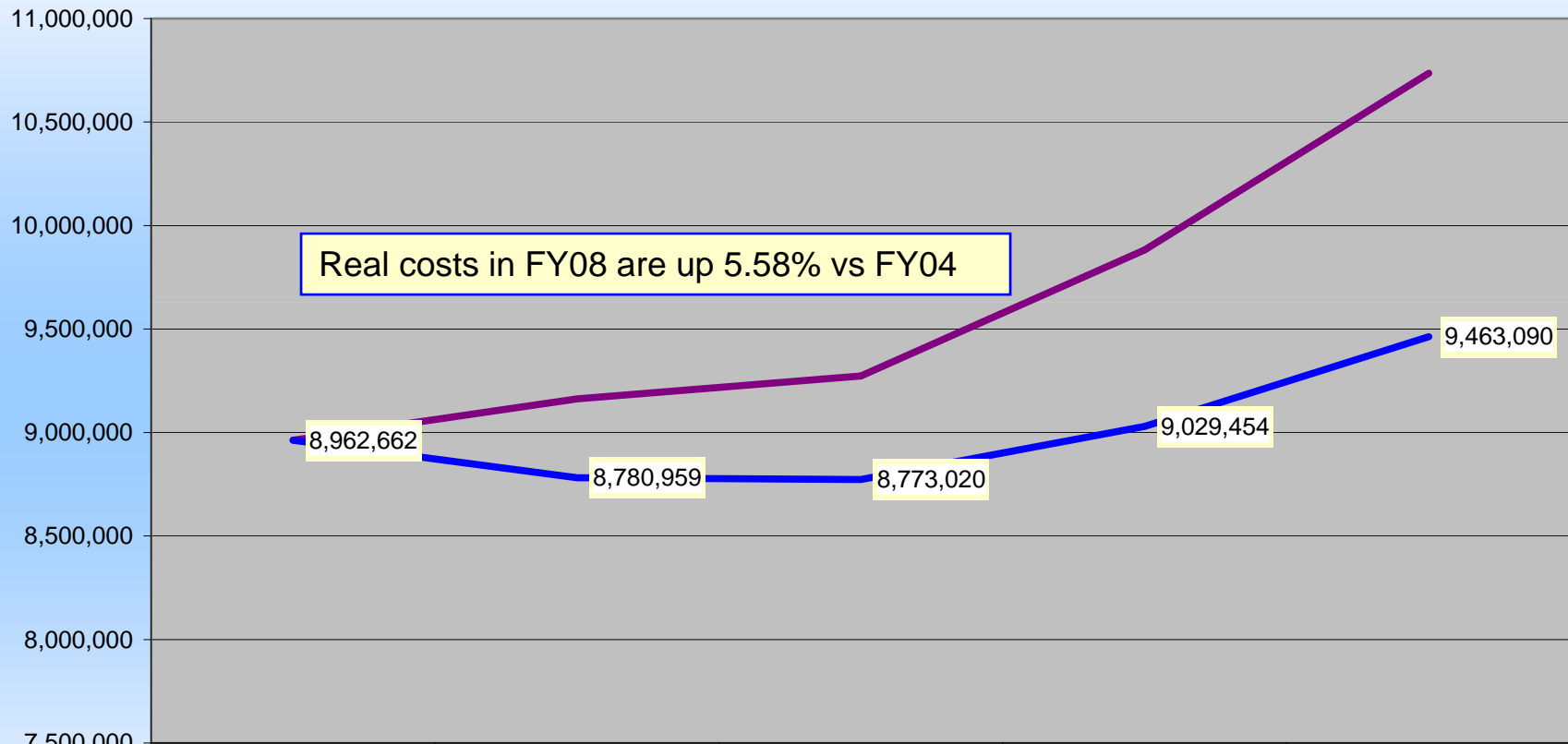
Police station (21,125 sq ft), 2 substations (transit & Fred Meyer); vehicles, dispatch

FY08 Program Revenue: \$558,850

FY08 Net Cost: \$10,564,925 (\$193.60 per capita)

# Analysis of Inputs

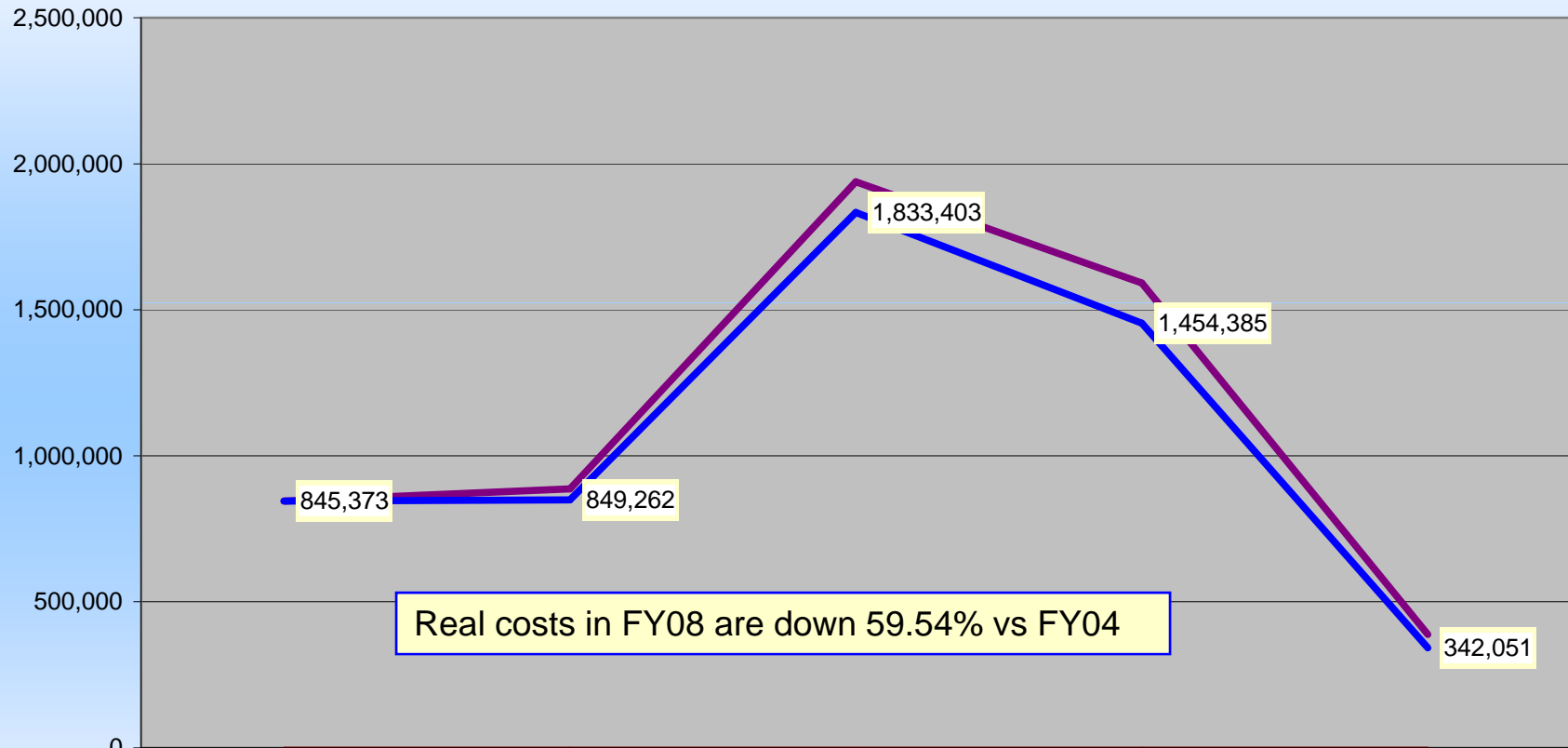
## Police Department Nominal & Real FY04-FY08



	ACTUAL FY 2004	ACTUAL FY 2005	ACTUAL FY 2006	ACTUAL FY 2007	ACTUAL FY 2008
Total	8,962,662	9,162,740	9,273,942	9,882,546	10,735,724
CPI	190.9	199.2	201.8	208.9	216.6
Real FY04 \$	8,962,662	8,780,959	8,773,020	9,029,454	9,463,090

# Analysis of Inputs

## Police Grants Nominal & Real FY04-FY08



	ACTUAL FY 2004	ACTUAL FY 2005	ACTUAL FY 2006	ACTUAL FY 2007	ACTUAL FY 2008
— Total	845,373	886,186	1,938,087	1,591,794	388,051
— CPI	190.9	199.2	201.8	208.9	216.6
— Real FY04 \$	845,373	849,262	1,833,403	1,454,385	342,051

## Comparative Department / Employee Analysis

Police Department	# of Sworn Officers 2007	Population 2007	# Officers Per 1,000 Population
Boise	306*	199,104	1.5
Caldwell	58	38,713	1.5
Coeur d'Alene	67	42,324	1.6
Idaho Falls	88*	53,049	1.5
Meridian	70	64,294	1.1
Nampa	126	80,397	1.6
Pocatello	86*	54,129	1.6
Twin Falls	63	41,236	1.7
Average for US City Police Agencies			2.3 (2007)
US Cities w/population 50,000 – 99,999			1.8 (2007)
Average Idaho Police Department			1.6 (2007)

\*Total number of sworn officers includes officers assigned to the City's respective airport.

- Boise Airport has 26 full-time officers (4 K9 units), 7 part-time officers
- Idaho Falls Airport has 1 full-time and 2 part-time officers
- Pocatello Airport has 3 full-time and 2 part-time

# Measures of Efficiency

## Additional Staffing Comparables

	Sworn FTE's Per 1,000 pop.	Civilian FTE's Per 1,000 pop.	Total FTE's Per 1,000 pop.
ICMA Survey Mean	1.93	0.51	2.45
ICMA Survey Median	1.87	0.51	2.51
Pocatello	1.67	0.72	2.39

***Pocatello's police staffing is comparable;  
perhaps a little lean on sworn officers and  
total staff.***

Source: ICMA FY2006 Survey, cities under 100,000 population, Police Services figure 13-3 "Sworn and Civilian FTE's (full time equivalents) per 1,000 population

# Measures of Efficiency

## Additional Expense Comparables

	<b>Total Operating &amp; Maint Expense per capita</b>
ICMA Survey Mean	\$195.69
ICMA Survey Median	\$182.23
Pocatello w/o grants	\$180.12
Pocatello with grants	\$194.22

***Pocatello's police expenditures are comparable; just a little less than average***

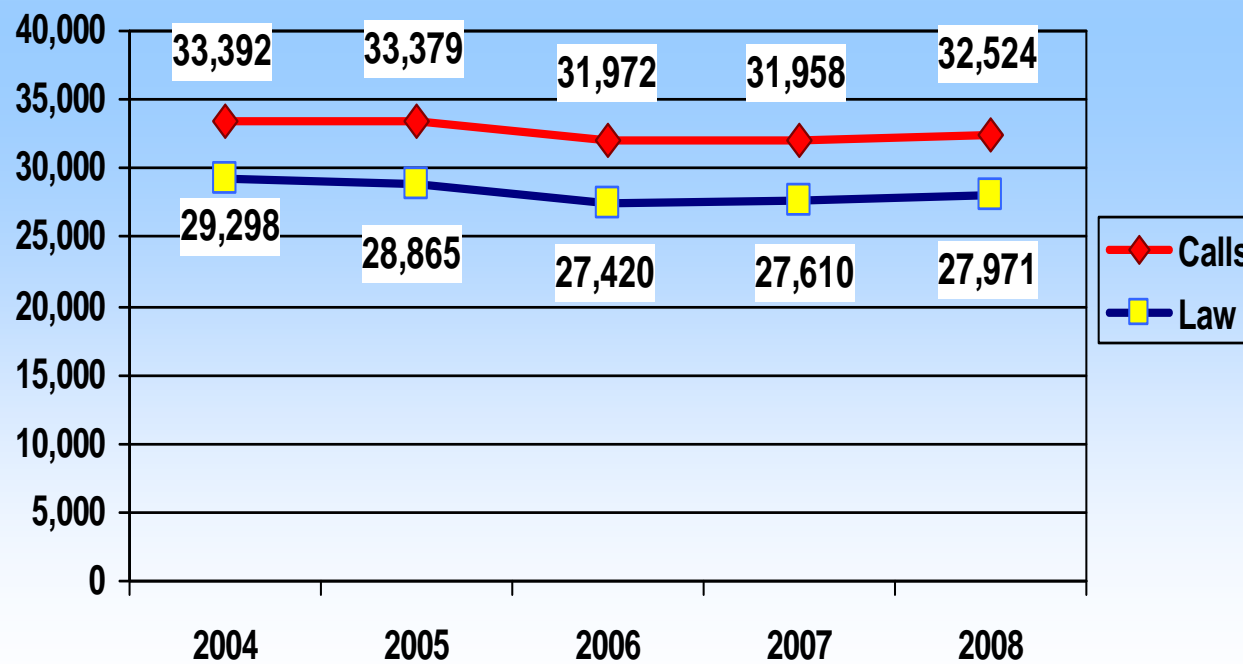
Source: ICMA FY2006 Survey, cities under 100,000 population, Police Services figure 13-4 "Total operating and Maintenance Expenditures Charged to the Police Department per capita"; FY06 figures increased by 3.54% to account for inflation and be comparable to Pocatello FY07 data.

## 2008 Preliminary Comparative Crime and Arrest Analysis

Police Department		Change From 2007	Total Offenses (Nibrs) 2008*	Number Of Cleared Cases	Percent Cleared
Boise –	199,104	-2,083	13,953	4,412	<b>31.7</b>
Caldwell –	38,713	-190	3,577	1,553	<b>43.5</b>
Coeur d’Alene –	42,324	-623	3,549	1,929	<b>54.4</b>
Idaho Falls –	53,049	+135	4,248	1,831	<b>43.1</b>
Meridian –	64,294	-132	2,798	1,305	<b>46.7</b>
Nampa –	80,397	-443	5,692	2,344	<b>41.2</b>
<b>Pocatello –</b>	<b>54,129</b>	<b>-268</b>	<b>4,259</b>	<b>1,745</b>	<b>41.0</b>
Twin Falls –	41,236	-28	3,869	1,706	<b>44.1</b>

# CALLS FOR SERVICE & LAW INCIDENTS 2004 - 2008

	2004	2005	2006	2007	2008
Calls	33,392	33,379	31,972	31,958	32,524
Law	29,298	28,865	27,420	27,610	27,971
Officers	74	72	73	74	74
Calls	451	464	438	431	440
Law	395	401	376	373	378



# CrimeReports.com

LOGIN | JOIN



Get Crime Alerts

Home

Crime Reports

Analytics

Enter location

Law Enforcement Agencies

911 N 7th Ave, Pocatello Idaho

Get Report

Search Help

Examples: "695 Coleman Avenue, San Jose CA", "San Jose, CA", "95110"

Sort by: Crime | Date | Distance

Period (days): 3 | 7 | 14 | 30

Calendar

Crime Types

Print

View: Crimes | Sex Offenders

Currently viewing incidents from 2/9/2009 to 2/12/2009 | 139 crimes shown.

COMMUNITY POLICING 12 Feb 2009

600 BLOCK S 5TH AVE

Distance: 0.91 miles

Identifier: 09-P02891

SUSPICIOUS

Send to Friend

TRAFFIC 12 Feb 2009

HILINE RD & MEADOWBROOK LA

Distance: 1.56 miles

Identifier: 09-P02890

DUI

Send to Friend

DISORDER 12 Feb 2009

800 BLOCK WASHINGTON AVE

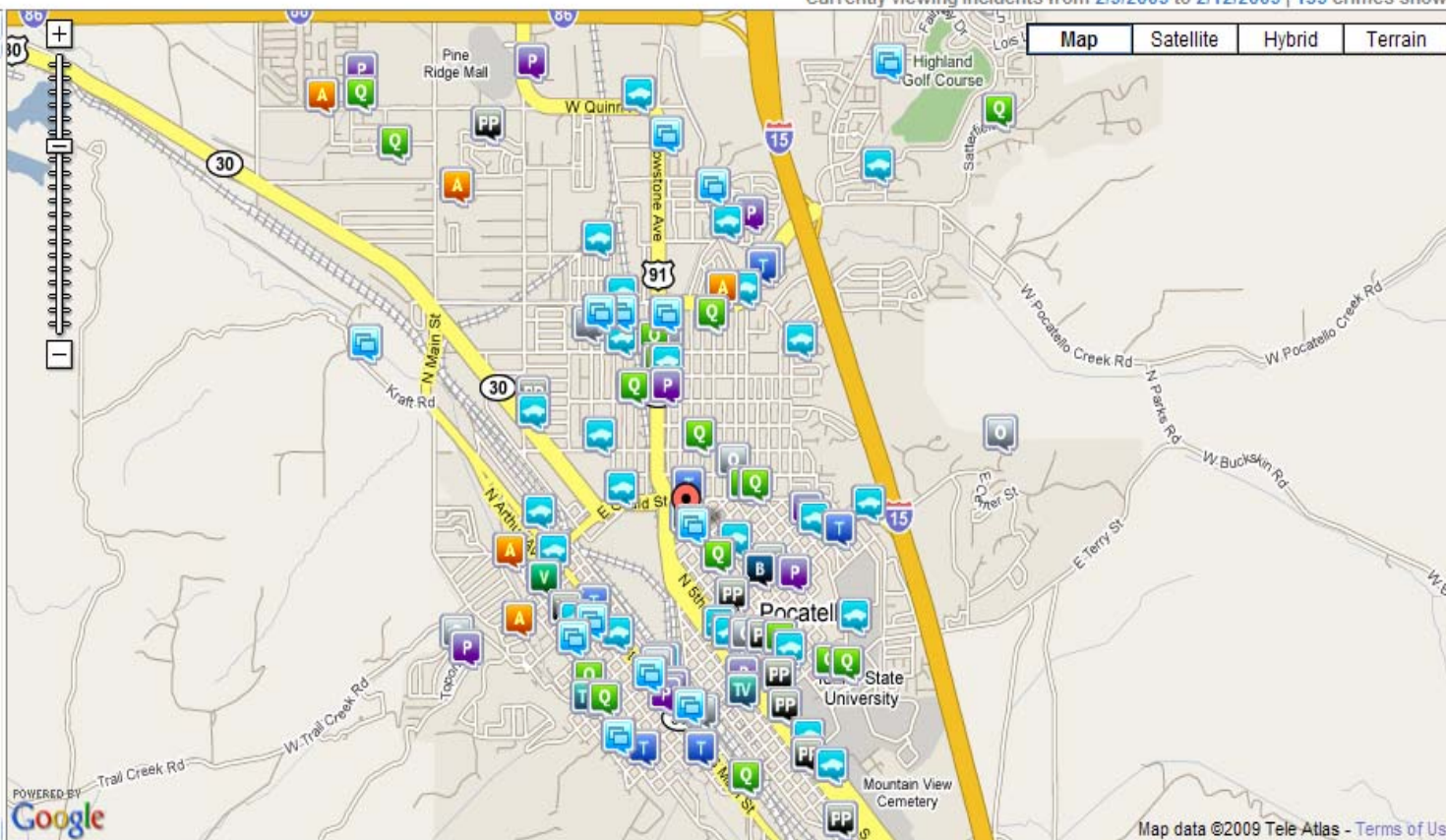
Distance: 1.08 miles

Identifier: 09-P02889

DISTURBANCE

Send to Friend

DISORDER 12 Feb 2009



Map data ©2009 Tele Atlas - Terms of Use

Data provided by: Pocatello Police Department, Bannock County Sheriff's Office

Print Friendly View

Distance Guide

Legend

Hide Map

# CrimeReports.com

Get Crime Alerts

Home

Crime Reports

Analytics

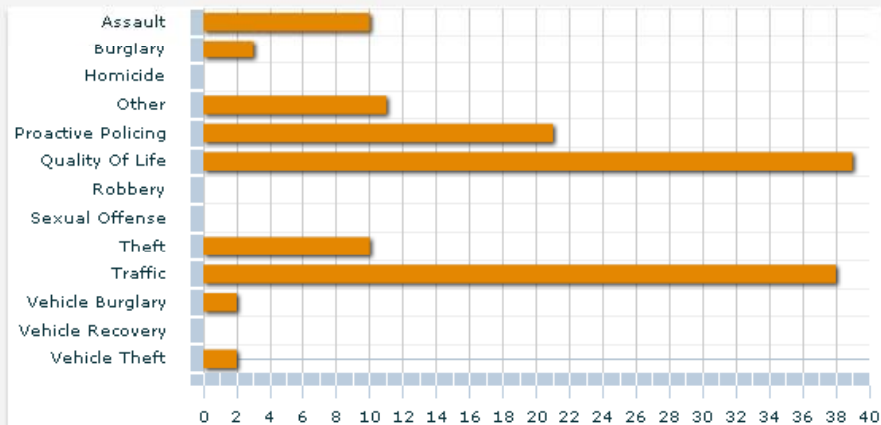
Law Enforcement Agencies

Jurisdiction: Pocatello Police Department

Period (days): 3 7 14 30 >> Calendar

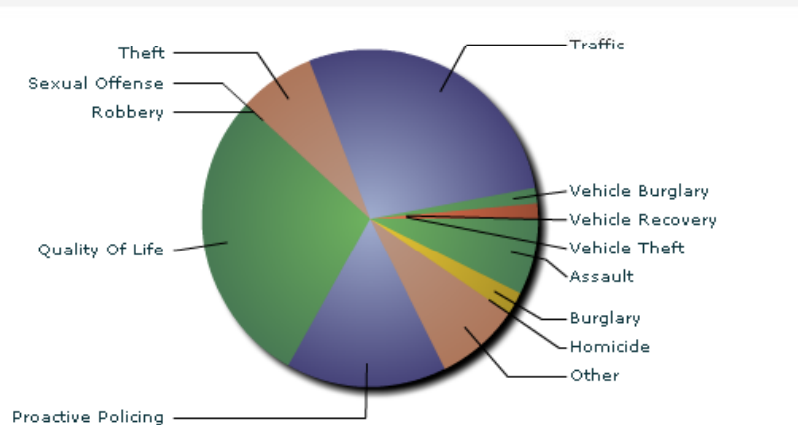
Interval: Daily

## Number of Crimes



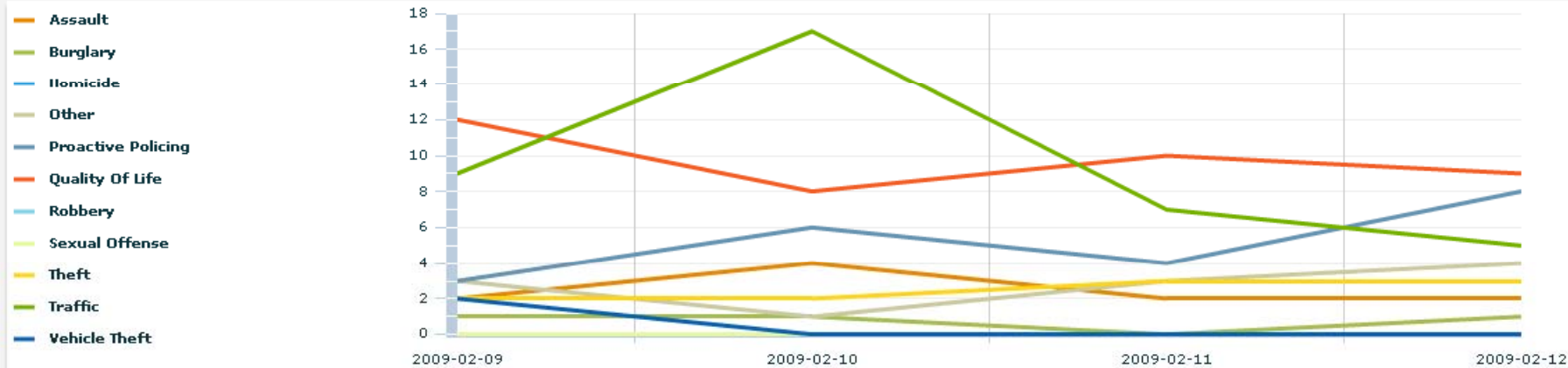
Full Size Image Print

## Crime As A Percentage of Total Crime



Full Size Image Print

## Crime Trend



Full Size Image Print

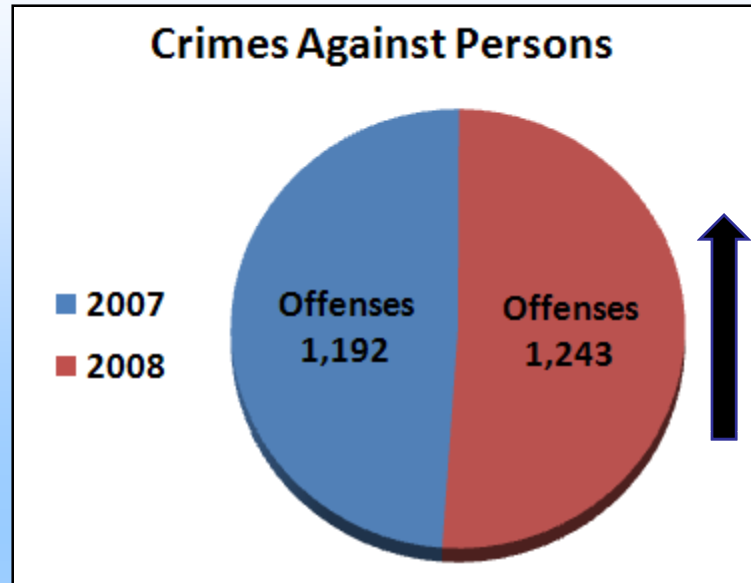
# Dispatch Calls 2007 – 2008

Hour	MON	TUE	WED	THU	FRI	SAT	SUN	2008 Total	2007 Total
00:00-00:59	96	103	104	116	165	264	238	1,086	1,015
01:00-01:59	73	96	85	96	92	209	225	876	916
02:00-02:59	61	83	69	110	110	197	205	835	907
03:00-03:59	47	52	41	43	69	137	106	495	507
04:00-04:59	44	43	35	48	41	71	74	356	342
05:00-05:59	40	30	27	35	29	49	34	244	292
06:00-06:59	56	48	44	40	43	37	29	297	269
07:00-07:59	106	96	106	109	105	75	39	636	566
08:00-08:59	207	177	149	191	174	140	110	1,148	1,162
09:00-09:59	224	226	196	208	192	162	116	1,324	1,320
10:00-10:59	172	197	197	178	205	145	155	1,249	1,298
11:00-11:59	220	211	195	166	181	162	154	1,289	1,269
12:00-12:59	235	215	251	199	215	172	193	1,480	1,335
13:00-13:59	235	241	267	212	227	175	172	1,529	1,400
14:00-14:59	237	245	236	205	221	151	199	1,494	1,446
15:00-15:59	249	245	251	229	254	201	165	1,594	1,600
16:00-16:59	218	235	218	221	250	204	167	1,513	1,475
17:00-17:59	255	267	247	244	257	189	178	1,637	1,615
18:00-18:59	213	209	264	233	254	216	203	1,592	1,534
19:00-19:59	185	194	202	204	221	189	179	1,374	1,393
20:00-20:59	176	198	203	230	214	229	164	1,414	1,348
21:00-21:59	182	172	161	212	237	194	154	1,312	1,362
22:00-22:59	167	177	185	192	231	204	140	1,296	1,347
23:00-23:59	145	152	164	181	247	247	138	1,274	1,237
2008 Total by Day	3,843	3,912	3,897	3,902	4,234	4,019	3,537	27,344	26,955
2007 Total by Day	3,803	3,780	3,878	3,896	4,264	3,916	3,419		

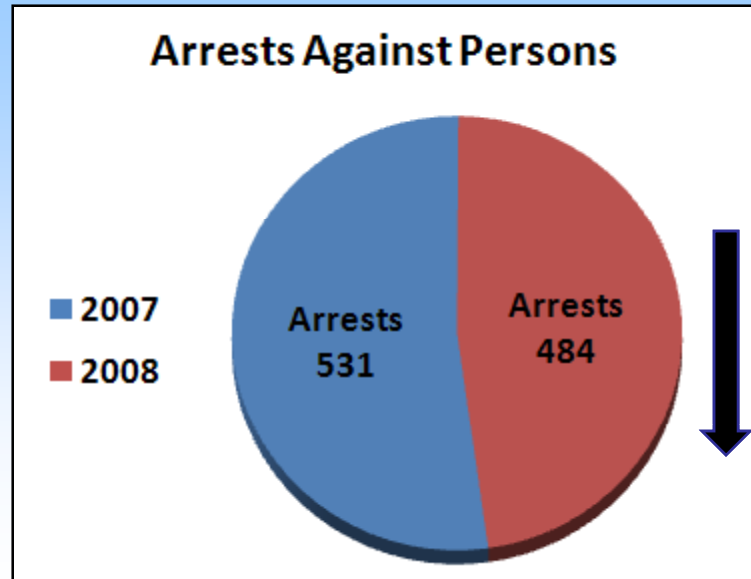
**Peak Days**

# Crimes Against Persons Comparison 2007 – 2008

CRIMES AGAINST PERSONS		
	2007	2008
Homicide	0	1
Rape	21	37
Sodomy	2	2
W / Object	0	1
Fondling	27	18
Incest	2	0
Statutory Rape	5	7
Agg Assault	103	135
Simple Assault	975	983
Intimidation	50	54
Kidnapping	7	5
	<b>1192</b>	<b>1243</b>



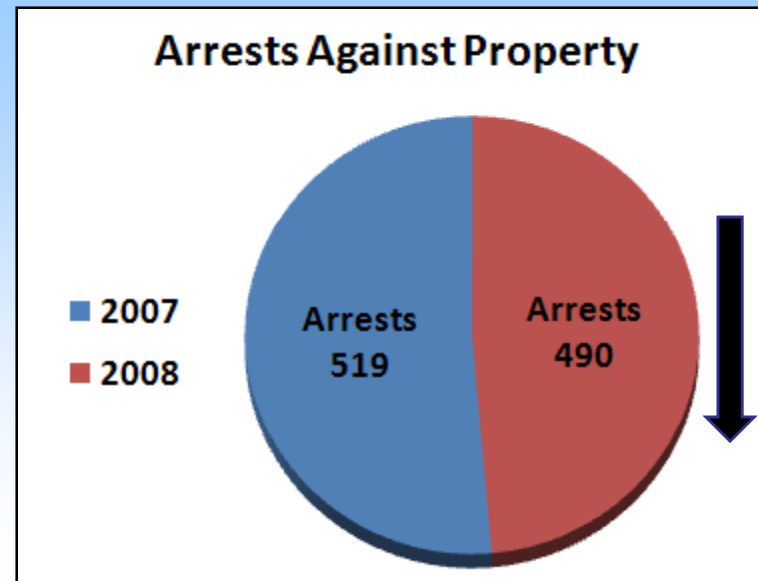
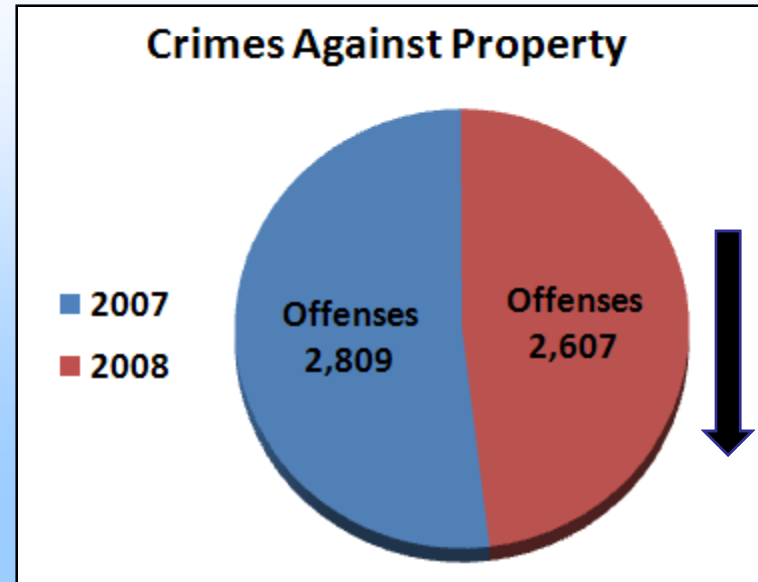
ARRESTS AGAINST PERSONS		
	2007	2008
Homicide	0	0
Rape	3	2
Sodomy	0	0
W / Object	0	0
Fondling	5	8
Incest	0	0
Statutory Rape	2	4
Agg Assault	58	55
Simple Assault	436	388
Intimidation	24	25
Kidnapping	3	2
	<b>531</b>	<b>484</b>



# Crimes Against Property Comparison 2007 – 2008

CRIMES AGAINST PROPERTY		
	2007	2008
Robbery	9	11
Burglary	247	252
Theft	1370	1304
Stolen Vehicle	84	63
Arson	4	11
Vandalism	865	810
Counterfeit/Forgery	65	19
Fraud	140	105
Embezzlement	18	14
Extortion/Blackmail	0	2
Bribery	0	0
Stolen Property	7	16
	<b>2809</b>	<b>2607</b>

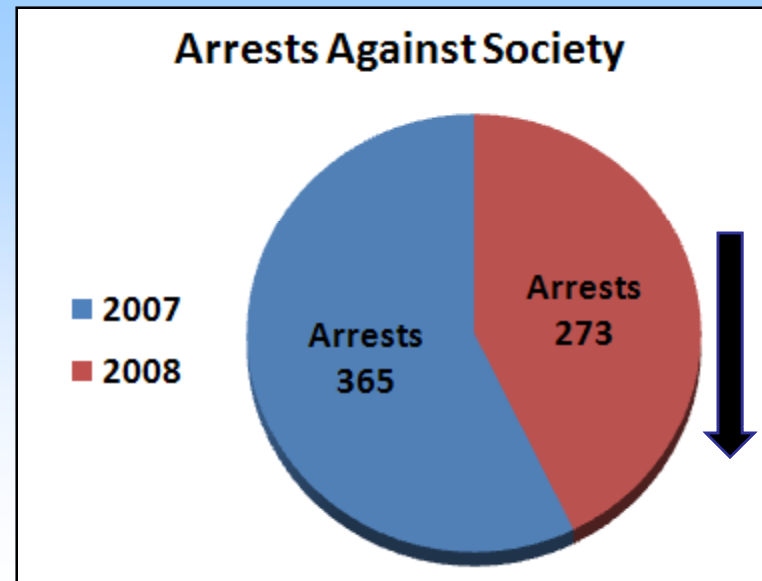
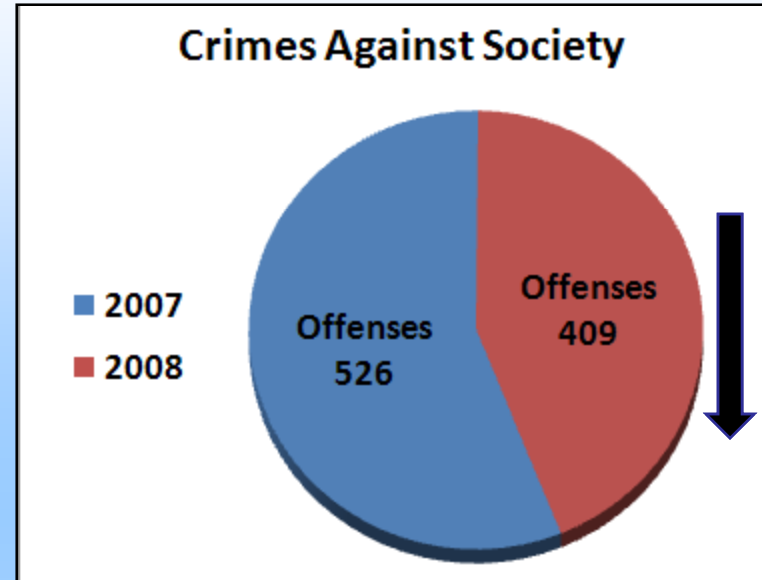
ARRESTS AGAINST PROPERTY		
	2007	2008
Robbery	0	7
Burglary	49	15
Theft	253	248
Stolen Vehicle	11	8
Arson	2	11
Vandalism	121	123
Counterfeit/Forgery	34	10
Fraud	14	21
Embezzlement	12	11
Extortion/Blackmail	0	4
Bribery	0	0
Stolen Property	23	32
	<b>519</b>	<b>490</b>



# Crimes Against Society Comparison 2007 – 2008

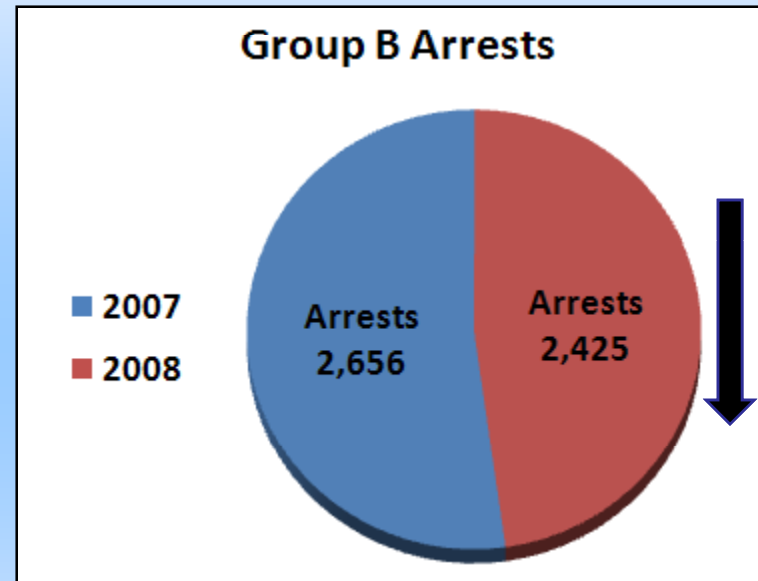
CRIMES AGAINST SOCIETY		
	2007	2008
Drug/Narcotic Violations	234	169
Drug Equipment Violations	221	142
Gambling	0	0
Pornography	3	7
Prostitution	0	1
Weapon Law Violations	68	90
	526	409

ARRESTS AGAINST SOCIETY		
	2007	2008
Drug/Narcotic Violations	235	155
Drug Equipment Violations	88	48
Gambling	0	0
Pornography	0	3
Prostitution	0	1
Weapon Law Violations	42	66
	365	273



## Group B Arrests Comparison 2007 - 2008

GROUP B ARRESTS		
Offense	2007	2008
Bad Checks	20	14
Curfew/Loitering/Vagrancy	41	28
Disorderly Conduct	384	355
DUI	397	354
Drunkenness	8	17
Non-violent Family Offense	45	38
Liquor Law Violation	356	366
Peeping Tom	0	0
Runaway	103	102
Trespass	94	78
All Other Offenses	1208	1073
<b>Total</b>	<b>2656</b>	<b>2425</b>



# DIVISION PROGRAMS

# PATROL DIVISION

- **RESPONSIBLE FOR PATROL AND EMERGENCY RESPONSE SERVICES**
- **PATROL TEAM ORGANIZATION**
  - Sergeant, Corporal & team of Patrol Officers
- **COMMUNITY POLICING TEAMS**
  - All employees on five teams covering five sections of city
  - Responsible for Community Policing activities in their areas
- **TRAFFIC UNIT**
  - Six Officers
    - Five trained as motor officers
    - Four trained for DUI enforcement
  - Crosswalk and school zone enforcement
  - Seat belt and child safety seat enforcement
  - Accident investigation and reduction
  - Selective Traffic Enforcement
  - Parades, escorts
- **K-9 UNIT**
  - 2 Explosive Ordnance Detection Canines
  - 2 Narcotic & Apprehension Canines
  - 1 Retirement
- **BICYCLE OFFICERS**
  - Downtown and Transit System patrol
  - Special event coverage
- **CRITICAL RESPONSE UNIT**
- **CIVIL DISTURBANCE UNIT**
- **FIELD TRAINING OFFICER PROGRAM**
  - 19 week curriculum for new officers
    - 2 week increase – Investigations
  - Train & develop officers before being placed on the street
- **SPECIAL PROGRAMS**
  - Operation Life Saver
    - Railroad crossing enforcement and education
  - Every Fifteen Minutes
    - Educate teenagers regarding drinking and driving
  - Safety Fairs

	2007	2008
Abandoned Vehicle	1145	1062
Accidents	1587	1586
Citations	5817	6752
DUIs	410	367
K-9 Deployments	246	194

# PATROL DIVISION

- **TASER PROGRAM**
  - 36 Officers trained
  - 2 Instructors trained
  
- **PROPOSED TASER TRAINING AND PROGRAM NEEDS FOR 2010**
  - Total Needs = \$2,649.96
    - 4 Taser Red Guns @ \$ 39.99 each = \$159.96
    - 2 Carhartt Coat & Pants for scenarios @ 100 each = \$400.00
    - 50 Duty Cartridges – replacements for deployments and broken cartridges = \$1,145.00
    - 50 Training Cartridges – additional training and/or remedial training = \$945.00
  
- **NUMBER OF OFFICERS IN NEED OF TASER TRAINING (30)**
  - 5 Lieutenants
  - 8 Sergeants
  - 8 Corporals/Detectives
  - 9 Patrol Officers/School Resource Officers

# PATROL DIVISION

## APPROXIMATE COSTS TO EQUIP UNTRAINED OFFICERS WITH THE TASER

### Equipment Costs

30 Taser X26 with Blade Tech holster at \$814.00 each....	\$24,420.00
84 Training Cartridges at 3 per officer (minimum) .....	\$1,677.48
56 XP 25 ft Cartridges for duty use at 2 per officer .....	\$1,341.20
<u>Total equipment costs.....</u>	<u>\$27,438.68</u>

### Instructor Training Costs

Officer B. Harris @ \$295 New Instructor Certification.....	\$295.00
Officer R. Sampson @ \$295 New Instructor Certification.....	\$295.00
Officer T. Marshall @ \$295 New Instructor Certification.....	\$295.00
Officer P. Tolman @ \$125 Instructor RE-Certification.....	\$125.00
<u>Total Training Costs.....</u>	<u>\$1,010.00</u>
Minus Two No Cost Host Agency Slots.....	- \$590.00
<u>Total Adjusted Training Costs.....</u>	<u>\$420.00</u>

**TOTAL TRAINING COSTS TO CERTIFY OFFICERS .....\$27,858.68**

**TOTAL PROGRAM & TRAINING NEEDS.....\$2,649.96**

**GRAND TOTAL .....\$30,508.64**

\*\* Overtime for the officers involved in the training due to scheduling is not included in this estimate. \*\*

# OFFICER USE OF FORCE

## RESPONSE TO AGGRESSION REPORTS

(When an officer uses physical force in order to accomplish an arrest)

	# Total Use of Force Incidents	# Incidents Involving Officer Injuries	# Officers Injured	# Suspects Injured
2008	76	11	13	25
2007	93	13	14	35
2006	70	12	14	27
2005	79	10	10	19
2004	77	8	9	30

	2007	2008
Bodily Force Only	86%	70%
Canine Involved	3%	4%
Bodily Force plus Chemical Agent/Baton	10%	2%
TASER Involved	1%	24%

# INVESTIGATIONS DIVISION

- **COLD CASE HOMICIDE INVESTIGATIONS**
  - Implemented new protocol for evaluating cold cases
  - Have gained another year commitment on the \$10,000 information rewards
  - Located evidence in a 25 year old homicide case that has been submitted for Mitochondrial DNA Analysis
    - Received a \$4,500 grant from RMIN to help pay for the DNA analysis
    - Additional DNA testing fees paid by the Pocatello Police Department \$2,800
  - Cable ONE and Lamar Advertising provided public service exposure through television and signboards
- **COMPUTER FORENSICS EXPANDED**
  - Tracked a bomb threat suspect and helped locate a longtime missing person using this technology
  - Assisted other jurisdictions in computer forensic cases
    - Oneida County, Power County, Bannock County, Chubbuck, Madison County, Bingham County
- **INTERNET CRIMES AGAINST CHILDREN TASK FORCE**
  - Forged an alliance with the Federal authorities to ensure offenders are prosecuted at either the State or Federal level
  - Specialized Peer-2-Peer Computer Training provided by ICAC grant
- **POSITIVE INVOLVEMENT WITH MEDIA IN CRIME ADVISORIES**
  - Resulted in numerous occasions where the public turned suspects in after they saw reports in the local media, resulting in recovery of thousands of dollars in stolen property as well as criminal charges

# INVESTIGATIONS DIVISION

- **BURGLARY AND ROBBERY UNIT**

- Working in conjunction with Federal and International law enforcement officials, jewelry store robbery suspect ,Thomas Quest III, was apprehended in a foreign country and extradited. He plead guilty and is now awaiting sentencing
- Successfully investigated, charged, and convicted a group of armed robbery suspects preying on local migrant workers

- **NARCOTICS OFFICE**

- Narcotics investigators arrested 87 adults for drug related offenses
- January 2008, a drug raid at 752 N 10<sup>th</sup> resulted in the seizure of 480 ml of liquid methamphetamine and the arrest of three adults for Trafficking in Methamphetamine
- October 2008, assisted Bannock County Narcotics Officers in a marijuana trafficking investigation that led to the seizure of 7,811 grams of marijuana and \$7,000 cash
- Significant technology upgrades for clandestine operations
- Narcotics Seized
  - Methamphetamine – 702 grams gross weight
  - Marijuana – 2,104 grams gross weight
  - Marijuana plants – 52 plants
  - Cocaine – 52 grams gross weight

- **CRIME ANALYSIS UNIT**

- Case support
- Intelligence distribution
- Map specific crimes
- Visual link charts

# INVESTIGATIONS DIVISION

- **DOMESTIC VIOLENCE**

- Follow up investigations are now assigned to investigators six days a week, including evenings

	2007	2008
Domestic Incidents	596	486
Cleared by Arrests	282	215

- **VICTIM/WITNESS SERVICES**

- Plays an expanded role in providing services and resources to a much broader group of victims and their families
- Added an emphasis on victims of Elder Abuse
- Generated a new pamphlet outlining the myriad of services provided to victims

- **MERCHANTS COMMUNITY RETAIL THEFT PROGRAM**

- Meet, educate and share information with merchants on theft crimes
- Training on methamphetamine products
- Counterfeit money recognition

# SUPPORT SERVICES DIVISION

- **RECORDS DIVISION**

- Child Safety Seat Inspections
- Safety Fairs
- Community Fingerprinting
- City License Processing
- COPS Teams

- **E-911 CENTER**

- 126,647 calls received
- New Dispatch Equipment
- Now receiving most wireless calls from the Pocatello area

- **LICENSING ENFORCEMENT**

- Process and issue business licenses
- Business Inspections
- Investigate Complaints
- Helped to enact new City Ordinance “Children’s Teaching Centers”

- **AIRPORT OFFICERS**

- 3 full-time officers and 2 part-time officers
- Corporal assumed duties as Airport Security Coordinator
- FAA Inspection Compliance

- **CODE ENFORCEMENT**

OFFENSES	2007	2008
Accumulations	38	15
Curb-Sidewalk	9	4
Fence	1	0
Historic District	0	0
Nuisance	14	15
Prop Maintenance	1126	998
Rec Vehicle	10	18
Signs	3	3
Snow Removal	11	28
Vehicles	27	33
Zoning	29	11
Ordinance Violation		24
<b>TOTALS</b>	<b>1270</b>	<b>1149</b>

DISPOSITIONS	2007	2008
Active	231	299
Closed	966	838
Citations	34	11
Unfounded	39	1
<b>TOTALS</b>	<b>1270</b>	<b>1149</b>

# SUPPORT SERVICES DIVISION

- **TRAINING DIVISION**

- Officers earned 21 new certificates in 2008
  - Basic, Intermediate, Master, Advanced, Management or Supervisors
  - 13,559.5 Training Hours

- **EXPENSES TO DATE**

- Training Account
  - Amount after executive adjustments.....\$38,482.00
  - Amount spent .....\$8,621.00
  - Balance.....\$29,861.00
  - Projected for upcoming training.....\$9,157.00
- Travel and Per Diem Account
  - Amount after executive adjustments.....\$35,730.00
  - Amount spent .....\$16,979.00
  - Balance.....\$18,751.18
  - Projected for upcoming training.....\$7,331.00

# SUPPORT SERVICES DIVISION

## COMPLETED TRAINING

### Instructors Trained

None

### High Liability

Firearms  
Rifle  
Taser Training  
Chemical Munitions  
Managing Electronic  
Records  
Monthly IRU Training  
EMD (Dispatch)  
In house K9  
Impact Weapons  
SFST Training

### Investigations

Officer Involved  
Shootings  
Crime Scene  
Investigations  
Drug and Gang Trends

### Supervision

First Line Supervision  
Evaluation Training  
ICS  
Advanced ICS

# SUPPORT SERVICES DIVISION

## TRAINING NEEDS

### Instructor Training

Arrest Techniques  
Handgun Retention  
Ground Fighting  
Impact Weapons  
Instructor  
    Development  
Accident Investigation  
Domestic Violence  
Crime Scene

### High Liability

Firearms  
Rifle  
Taser Training  
Records Training  
Monthly IRU  
Dispatch Training  
In house K9  
EVOG  
Instructor  
    Development  
Impact Weapons  
Arrest Techniques  
Handgun Retention  
Ground Fighting  
Ethics  
Cultural Diversity  
TIC Team Training  
CNT Training  
CDU Training  
Patrol Tactics  
Critical Incident Team

### Investigations

Death Investigation  
Crime Scene  
    Investigation  
Narcotics/Gang  
Interview/Interrogation  
Accident Investigation  
Domestic Violence  
CVSA Recertification  
Polygraph  
    Recertification  
Statement Analysis

### Supervision

First Line Supervision  
Evaluation Training  
ICS  
Advanced ICS  
Leadership Courses

# SUPPORT SERVICES DIVISION

- **SPECIAL FUNCTIONS**

- School District #25 Emergency Crisis Planning & Threat Assessment Committees
- Merchants Community Retail Theft Meetings Monthly
- Community Prevention Meetings
- Key Communicators Network

- **COMMUNITY SERVICES CRIME PREVENTION OFFICER**

- Completed over 400 presentations throughout the community
- Conducted 41 Internet Safety Presentations to 3,678 people
- Presented Stranger Danger & Internet Safety to the elementary and middle schools
- Oversees Volunteer Program
  - Volunteers completed 12,297.5 hours of services amounting to \$239,924.23
  - McGruff Volunteers = 558
  - Department Volunteers = 70
  - Neighborhood Watch = 470
- Monthly Recognition and Annual Appreciation Banquet

- **JUVENILE RESOURCE PROGRAMS**

- DIVERSION / YOUTH COURT PROGRAM
  - Programs to hold first time offenders accountable without a juvenile court record
- C.A.G.E – Community Anti Gang Enforcement – Regional
- D.D.R.C. – District Discipline Review Committee
- D.A.R.E. – Drug Abuse Resistance Education
- G.R.E.A.T Program – Gang Resistance, Education & Training
  - Over 80 7<sup>th</sup> and 8<sup>th</sup> graders participated in the G.R.E.A.T. Summer Component Program

- **SCHOOL RESOURCE OFFICERS**

- SROs held almost 3,000 conferences with students and over 900 conferences with parents<sup>42</sup>
- SROs accounted for 53 percent of juvenile violations
- Target 50 Summer Program

# School Resource Officer Functions by Schools

SCHOOL DISTRICT #25 PARTIALLY FUNDS  
SUPPORT SERVICES POSITIONS  
TOTALING \$209,486.04

- 4 School Resource Officers
- 1 Administrative Assistant

TOTAL JUVENILE ARRESTS	2007	2008
Arrests	1487	1153
Offenses	1690	1405

School	Officer	Charges: # of JVRs	Reports: # of original Lis	Follow-up	Traffic: # of citations	Truancy: # of cases	Truancy Conferences	Conferences: # of parent conferences	Probation: # of home visits	Classroom: # of GREAT classes	Classroom: # of other presentations	Classroom: # of DARE classes	Classroom: # of K-5 DARE visits	Diversions: # of informal	After School: # of after school events	Elem. Schools: # of calls taken	Patrol Calls: # of calls taken unrelated to school	Total
Century	Fry	98	88	54	8	22	36	158	56		1			11	36			568
Highland	Daniels	149	235	14	25	63	22	137	30		11			50	5	1	2	744
Pocatello	Peck	167	185	16	6	37	37	84	139		11			63	39		4	788
Alameda Ctr.	Barbre	125	157	14	10	18	9	103	124		35			21	23	9	11	659
Franklin	Hancock	63	53	23	4			130	39	110	7			5	40	10	4	488
Hawthorne	Wadsworth	19	75	4			1	42	30	120				10	28	10	3	342
Irving	Edwards	92	170	32		12	10	149	44	112	19			32	45	25	6	748
DARE	Nielsen	9	23	8		10		12	3		20	313	11	2	12	4		427
Sgt/Elem.	Canfield	25	130	28		72	19	100	32		34			20	4	110	1	575
<b>Total</b>	<b>2008</b>	<b>747</b>	<b>1116</b>	<b>193</b>	<b>53</b>	<b>234</b>	<b>134</b>	<b>915</b>	<b>497</b>	<b>342</b>	<b>138</b>	<b>313</b>	<b>11</b>	<b>214</b>	<b>232</b>	<b>169</b>	<b>31</b>	<b>5339</b>

# Explanatory Factors

*There are some factors that could cause police manning, expenditures, and crime rate to be higher; the fact they are not is notable*

- **We have an airport (4 sworn).**
  - Some do not (Meridian, Nampa, Coeur d'Alene)
- **We have a University with 15,912 students enrolled (9,426 full-time); most not reflected in census population**
  - Boise & Moscow have this; none of the others do
- **We are a central city; our daytime population grows with influx from surrounding areas.**
  - Not unusual. Idaho Falls shares this. Some do not. Meridian probably shrinks during the day as their population commutes into Boise.

## **2009 – 2010 PROJECTS & GOALS**

- **2009 is the first year of a new Five Year Strategic Plan**
- **Seek alternative funding sources**
- **Increase Forensic and Analytical capabilities**
- **Expand information sharing and analysis with Spillman InSight module**
- **Implement Lexipol automated policy manual**
- **Increase Elderly Abuse awareness and resources**
- **Implement Critical Incident Team for Mental Health incidents**
- **Proactive recruitment with incentives**
- **Complete Mesh Network**

# 2009 – 2010 ISSUES & CONCERNS

- **MEET EXPANDED RESPONSIBILITIES OF OUR COMMUNICATIONS CENTER**
  - E-911
  - (3 Dispatchers)
- **NO SWORN PERSONNEL INCREASES FOR THE LAST FIVE YEARS**
  - Department reorganization
  - (Upgrade vacant Code Enforcement position to Sergeant)
  - (3 Patrol Officers)
  - (1 Grant Researcher/Writer)
- **CRITICAL TRAINING NEEDS**
  - Supervision
  - High Liability
  - Investigations
- **ENHANCEMENT OF CASE SOLVABILITY**
  - Trend Analysis/Link Analysis
  - Crime Intelligence and Investigative Support
  - (1 Crime Analyst)
- **RETURN ON INVESTMENT**
- **CAPITAL EXPENDITURES**
  - Body armor replacements
  - Vehicle Replacements