



Street Operations
1080 South 1st Avenue
Pocatello, ID 83201
(208) 234-6250
(208) 234-6194
Fax: (208) 478-7152

TO: ALL AGENCIES
DATE: July 31, 2011
FROM: City of Pocatello
RE: Portneuf River Levee Maintenance Bi-Annual Report

Dear Sir,

In the past 6 months since our February 1st report, the City has continued their efforts towards all deferred maintenance items as outlined in the USACOE report dated, August 18, 2009 and the Williams Engineering report, dated October 27, 2010. While working towards compliance, we have also noted in our attached inspection reports, some deficiencies we are currently working on. Our most recent focus has continued to be on vegetation and closure repairs. We feel these areas of focus would most benefit Public Safety in the case of an unusual event.

The City's focus will continue to be to strive towards compliance with all deferred maintenance, as duly noted in previous inspection reports. Again, we are working on an extended time period for compliance and completion of all maintenance requirements. As previously discussed, we will be working on sections of the levee as they have been divided, per the map provided to the City by the USACOE and verified by our City survey crew.

Attached you will find our 90 day inspection reports, as well as, progress reports for the ongoing maintenance.

If you have any questions or concerns, please feel free to contact me at (208)234-6250.

Sincerely,

Randy Ghezzi
Street Operations Superintendent



Street Operations
1080 South 1st Avenue
Pocatello, ID 83201
(208) 234-6250
(208) 234-6194
Fax: (208) 478-7152

Vegetation Deficiencies

Vegetation—As the City moves forward with vegetation management, we continue to use our selective tree removal and vegetation management process, as outlined in our Maintenance Manual.

Vegetation Completed

Please refer to our 90 day inspection checklist for an update on our progress.



1200 CFS

Our mission is to provide public services related to the safe and efficient movement of traffic on the 265 miles of city maintained streets, within the incorporated city limits.



Street Operations
1080 South 1st Avenue
Pocatello, ID 83201
(208) 234-6250
(208) 234-6194
Fax: (208) 478-7152

Depressions and Rutting Deficiencies

Along the west side, we currently have noted rutting from maintenance vehicles accessing the levee system. This will be repaired at the completion of our planned work.

Depressions and Rutting Completed

In the spring of 2011, we made minor repairs to some rutted areas as weather conditions and stream flows were not favorable. Our entire levee section remains accessible at this time.



Our mission is to provide public services related to the safe and efficient movement of traffic on the 265 miles of city maintained streets, within the incorporated city limits.



Street Operations
1080 South 1st Avenue
Pocatello, ID 83201
(208) 234-6250
(208) 234-6194
Fax: (208) 478-7152

Closure Deficiencies

During our last 90 day inspection the flows were about 1200 CFS. 90% of our flap gates were not able to be inspected due to flows covering a portion of the gate. Following our inspection and this report, we will be performing maintenance on 18 gates. The required maintenance will be silt removal.

Closure Repairs and Maintenance

All closures have been marked with a number that coincides with a map provided in the Williams Engineering report. These closures have also been marked with a sticker that provides the inspection and exercise date. All closures are exercised and functioning properly at this time.



850 CFS



1200 CFS



1200 CFS

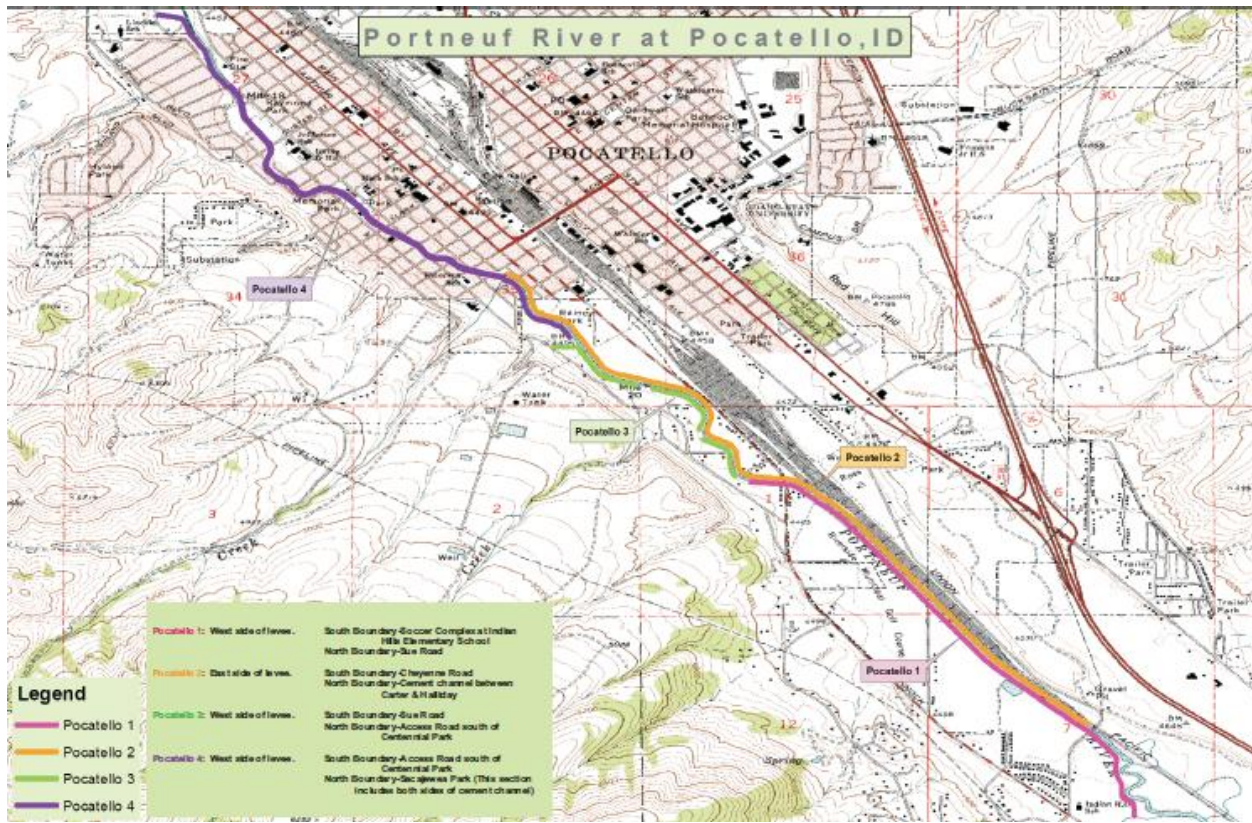
Our mission is to provide public services related to the safe and efficient movement of traffic on the 265 miles of city maintained streets, within the incorporated city limits.



Street Operations
1080 South 1st Avenue
Pocatello, ID 83201
(208) 234-6250
(208) 234-6194
Fax: (208) 478-7152

Levee Sections

Attached is a levee section map with actual high points. The City would request approval from the ACOE recognizing the high points, as noted for the different levee sections. As noted on the attached map, there may be more than the original four high points as shown on previous maps.



Our mission is to provide public services related to the safe and efficient movement of traffic on the 265 miles of city maintained streets, within the incorporated city limits.



Street Operations
1080 South 1st Avenue
Pocatello, ID 83201
(208) 234-6250
(208) 234-6194
Fax: (208) 478-7152

Access Deficiencies

No deficiencies at this time.

Sloughing & Cracking Deficiencies

There are currently no locations showing signs of sloughing and cracking along the levee. The levee appears to have no compromise to the structural integrity at this time. The noted erosion problems from previous reports have been addressed and no others have been noted.

Seepage, Saturated Areas

No seepage or saturated areas at this time.

Slope Stability

No displacement or bulges.

Animal Burrows

We currently have a number of burrows along the levee system. These burrows are isolated between Cheyenne and South Bannock Highway and do appear to be within the rip rap area of the levee. To date, we have trapped and relocated 45 burrowing rodents.

Encroachments

We can report, there are no encroachments causing access problems at this time. We do have a few pump locations that have conduits running thru the levee. These conduits have been in place for many years and are below the 3 foot freeboard area.

Bank-line

All noted rip rap deficiencies have been repaired

Structural Foundation

No structural deficiencies to report at this time.