

Household Hazardous Waste

Over 80% of residents recycle or properly dispose of products that contain chemicals such as pesticides, paint, solvents, used motor oil, & other auto fluids.

Don't dump household hazardous waste or unused medications down the sink, toilet, or storm drain.

FREE disposal of household hazardous waste at the Bannock County Landfill on the 1st Saturday of every month, April through October. (208) 236-0607

FREE disposal of unused medications using secure collection boxes at the Pocatello and Chubbuck Police Departments and Bannock County Sheriff's office.

Useful Contacts

Storm Water Hotline – (208) 234-6519

Bannock County Landfill – (208) 236-0607
Yard waste composting, FREE!
Household Hazardous Waste disposal, FREE!

City of Chubbuck Sanitation – (208) 237-2430
Curbside recycling/trash pickup.

City of Pocatello Sanitation – (208) 234-6192
Curbside recycling/trash pickup.
Electronic waste recycling, FREE!
pocatellorecycles.pocatello.us

Conserve Pocatello – conserve.pocatello.us



StreetwiseRiverwise.pocatello.us

Over 85% of local residents protect the Portneuf by keeping their sidewalks and gutters free of debris such as leaves and grass clippings.

Over 75% of local residents protect the Portneuf by washing their cars on their lawns or at a car wash.



If you see illegal dumping, report it!

(208) 234-6519

Water that flows into storm drains is NOT treated before it enters the Portneuf River.

Portneuf Valley Streetwise Riverwise

Pocatello • Chubbuck • Bannock County

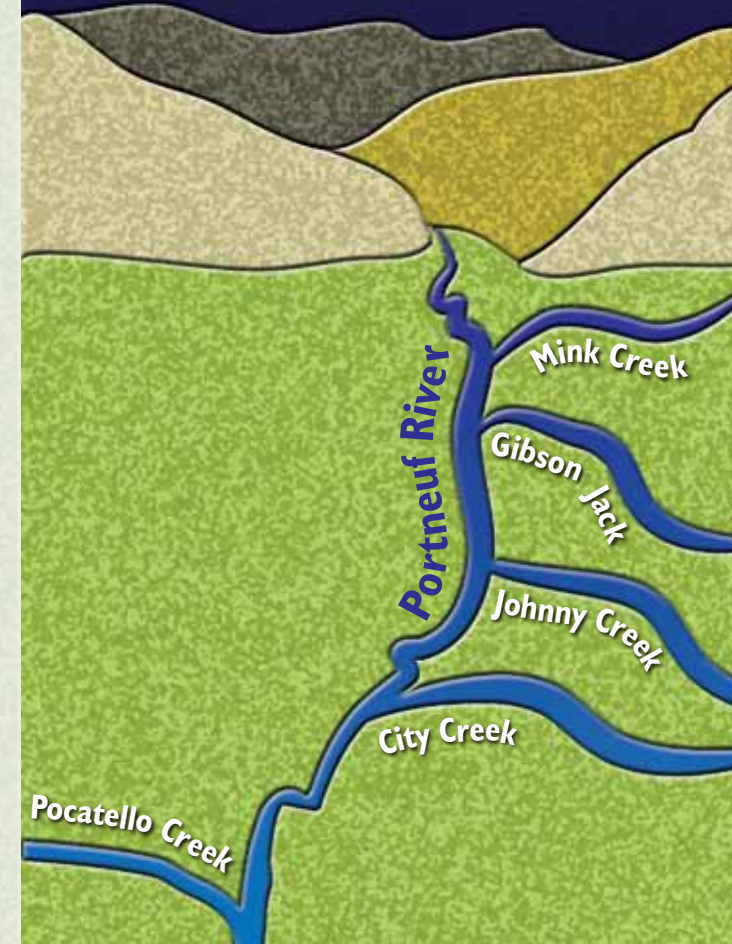
(208) 234-6518

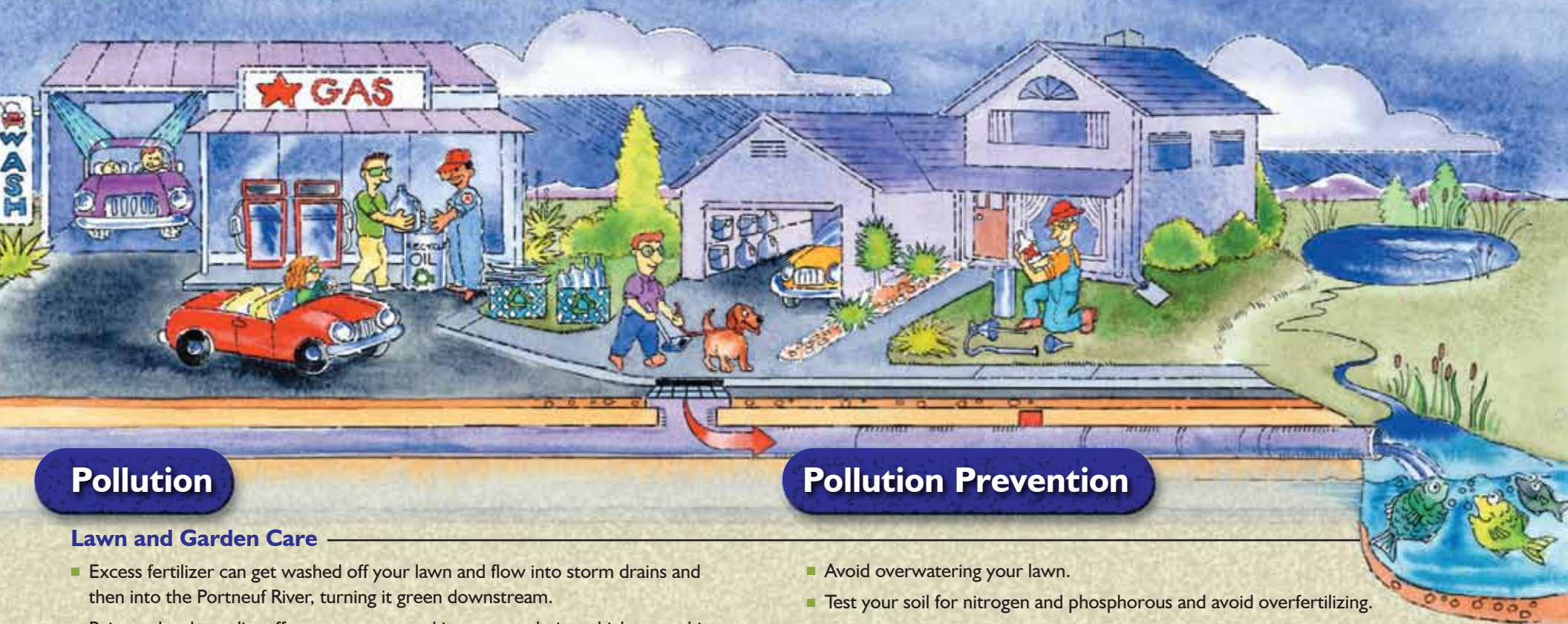
StreetwiseRiverwise.pocatello.us



Street Wise RiverWise

Tips For Residents





Pollution

Lawn and Garden Care

- Excess fertilizer can get washed off your lawn and flow into storm drains and then into the Portneuf River, turning it green downstream.
- Rain washes bare dirt off your property and into storm drains which carry this dirty water to the Portneuf River.
- Grass clippings and leaves left on sidewalks and streets contribute excess nutrients to the Portneuf River, turning it green downstream.

Household Cleaning & Pest Removal

- Common household pesticides can be washed off your yard into the Portneuf at levels that may be harmful to fish. Pesticides and cleaners poured onto the ground can be absorbed into our drinking water.

Water Infiltration

- When water leaves your property and flows onto the street, it picks up all the dirt and debris on the street as it travels to the Portneuf River.

Vehicle Travel and Care

- Cars leak fluids and deposit heavy metals and oils onto our streets through everyday use. These fluids are a major cause of pollution in the Portneuf River.
- Soapy wash water is harmful to the Portneuf River. As water flows off your driveway it picks up dirt and other debris, carrying it to the Portneuf River.

Pet Care

- Pet waste contains bacteria that can end up in the Portneuf.

Pollution Prevention

- Avoid overwatering your lawn.
- Test your soil for nitrogen and phosphorous and avoid overfertilizing.
- Seed and mulch bare areas as soon as possible
- Keep your sidewalk and street gutters free of debris such as trash, soil, grass clippings and leaves. Instead of hosing off your driveway, use a broom. Place debris in the trash.

- Choose less toxic pest controls for your home and garden.
- Dispose of pesticides, paint, and cleaning materials at the FREE household hazardous waste days. Never pour them down a storm drain or onto the ground.

- Keep water from your roof and driveway on your property - direct this water into rain barrels, permeable pavement, raingardens or vegetated swales.

- Take alternative transportation modes (bus, walk, bike) when possible. Keep your vehicle maintained to reduce pollution and increase fuel economy.
- Recycle your oil & other vehicle fluids at the Landfill or a service station (FREE).
- Use a commercial car wash when possible. If you wash your car at home, do so on your lawn. Pour soapy water down the sink, not on the street.
- Whether in your backyard or on a walk, remember to always pick up after your pet. Place waste in the trash.